

Peach Cobbler

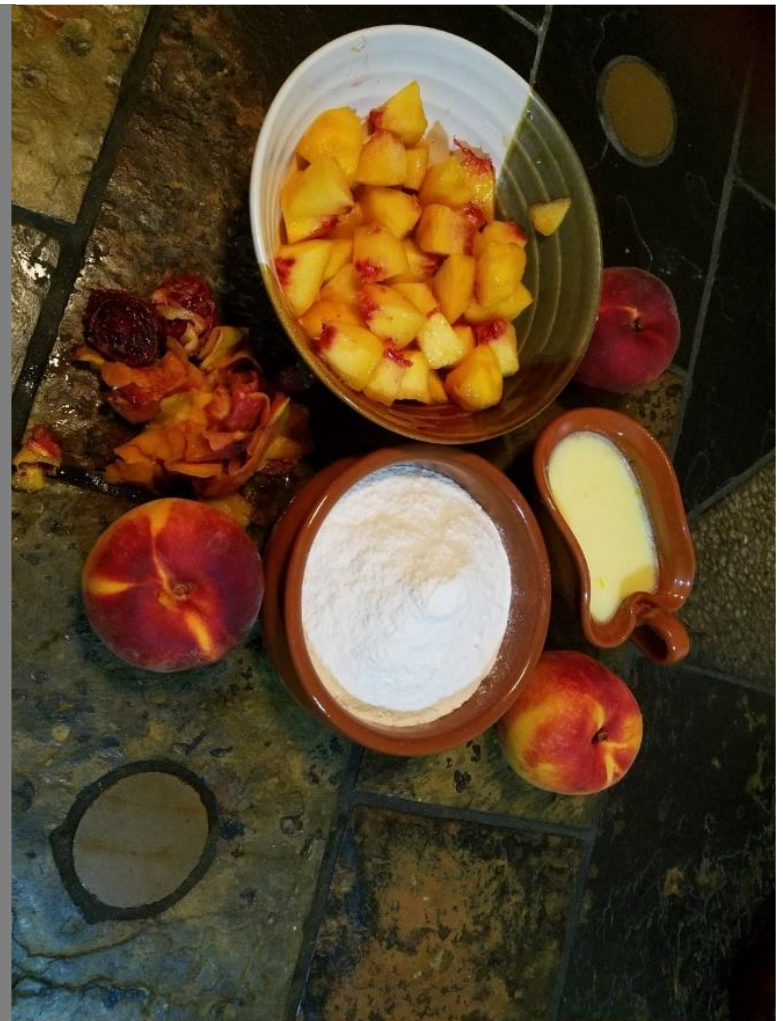


cottage@peachcobblair.com



SUMMER 2021

- Throwback Titbits
- Construction Corner
- Horticultural Haven
- Repair and Recovery
- Volunteers and Visitors
- Secondhand Scrounging
- Tracking with Tech





Throwback Titbits: *Summer 2018*

We put down red mulch on the garden paths giving a dramatically improved look to the garden. We continued building up the garden including the use of cardboard to control weeds and installing both gates. We also picked up a whole load of garden pebbles advertised on a Nextdoor post including a lot of tools/materials. We rebuilt the tool cage a few times since it kept collapsing after heavy rains. That summer we spotted rat snakes and ground hogs; the former being welcome visitors; not so much the latter! We did a lot of work clearing up the berry areas and had to deal with fixing intermittent issues with the garden tractors and the backhoe ignition key. We experimented with various locations for feeding sugar water to the bees to help them with any transition shocks. We visited a dairy farm during the process of locating straw bales for construction. Alan christened his solar fence system Mark 1 and we installed it in the garden. We spent many evenings at home untangling the mess with the fence casing before taking it to the land and laying out the wiring around the land. We had our first encounter with stink bugs which we captured in soapy water whenever possible. A huge squash plant and colored corn was our first big gardening success. The apple and plum trees were starting to put out some fruits. We familiarized ourselves with the services given by the extension county and put in queries using forms for reporting issues with our fruit trees.



FRUIT

NAME: *Alan Clark* DATE: *07/18/2018*

ADDRESS: *11111 11th Street, Suite 1111, San Francisco, CA 94103*

PHONE: *415-555-1212* NAME OF YARD: *11111*

DIAGNOSIS: *1. The tree is showing signs of stress. 2. The tree is showing signs of stress. 3. The tree is showing signs of stress. 4. The tree is showing signs of stress. 5. The tree is showing signs of stress. 6. The tree is showing signs of stress. 7. The tree is showing signs of stress. 8. The tree is showing signs of stress. 9. The tree is showing signs of stress. 10. The tree is showing signs of stress. 11. The tree is showing signs of stress. 12. The tree is showing signs of stress. 13. The tree is showing signs of stress. 14. The tree is showing signs of stress. 15. The tree is showing signs of stress. 16. The tree is showing signs of stress. 17. The tree is showing signs of stress. 18. The tree is showing signs of stress. 19. The tree is showing signs of stress. 20. The tree is showing signs of stress. 21. The tree is showing signs of stress. 22. The tree is showing signs of stress. 23. The tree is showing signs of stress. 24. The tree is showing signs of stress. 25. The tree is showing signs of stress. 26. The tree is showing signs of stress. 27. The tree is showing signs of stress. 28. The tree is showing signs of stress. 29. The tree is showing signs of stress. 30. The tree is showing signs of stress. 31. The tree is showing signs of stress. 32. The tree is showing signs of stress. 33. The tree is showing signs of stress. 34. The tree is showing signs of stress. 35. The tree is showing signs of stress. 36. The tree is showing signs of stress. 37. The tree is showing signs of stress. 38. The tree is showing signs of stress. 39. The tree is showing signs of stress. 40. The tree is showing signs of stress. 41. The tree is showing signs of stress. 42. The tree is showing signs of stress. 43. The tree is showing signs of stress. 44. The tree is showing signs of stress. 45. The tree is showing signs of stress. 46. The tree is showing signs of stress. 47. The tree is showing signs of stress. 48. The tree is showing signs of stress. 49. The tree is showing signs of stress. 50. The tree is showing signs of stress. 51. The tree is showing signs of stress. 52. The tree is showing signs of stress. 53. The tree is showing signs of stress. 54. The tree is showing signs of stress. 55. The tree is showing signs of stress. 56. The tree is showing signs of stress. 57. The tree is showing signs of stress. 58. The tree is showing signs of stress. 59. The tree is showing signs of stress. 60. The tree is showing signs of stress. 61. The tree is showing signs of stress. 62. The tree is showing signs of stress. 63. The tree is showing signs of stress. 64. The tree is showing signs of stress. 65. The tree is showing signs of stress. 66. The tree is showing signs of stress. 67. The tree is showing signs of stress. 68. The tree is showing signs of stress. 69. The tree is showing signs of stress. 70. The tree is showing signs of stress. 71. The tree is showing signs of stress. 72. The tree is showing signs of stress. 73. The tree is showing signs of stress. 74. The tree is showing signs of stress. 75. The tree is showing signs of stress. 76. The tree is showing signs of stress. 77. The tree is showing signs of stress. 78. The tree is showing signs of stress. 79. The tree is showing signs of stress. 80. The tree is showing signs of stress. 81. The tree is showing signs of stress. 82. The tree is showing signs of stress. 83. The tree is showing signs of stress. 84. The tree is showing signs of stress. 85. The tree is showing signs of stress. 86. The tree is showing signs of stress. 87. The tree is showing signs of stress. 88. The tree is showing signs of stress. 89. The tree is showing signs of stress. 90. The tree is showing signs of stress. 91. The tree is showing signs of stress. 92. The tree is showing signs of stress. 93. The tree is showing signs of stress. 94. The tree is showing signs of stress. 95. The tree is showing signs of stress. 96. The tree is showing signs of stress. 97. The tree is showing signs of stress. 98. The tree is showing signs of stress. 99. The tree is showing signs of stress. 100. The tree is showing signs of stress.*

Stephen Clark County Extension Specialist
Charles Clark County Extension Specialist



Throwback Titbits cont....





Construction Corner

We did lose some time to a business trip we both had to take to Boston. However our biggest achievement this summer is the use of forms to successfully speed up cobbing walls. We finished connecting the verticals along the closing wall giving the whole structure more stability. All the window frames were installed and the windows placed in them without nailing them in. We setup the cooking grill next to the table and cleared up the area to make it comfortable. We also started camping overnight in a tent we bought for the truck bed. This helped in increasing the amount of work we did. We also finished building the closing stem wall. We also went over the electrical wiring a few more times and have started putting in the switch/outlet receptacle boxes, the main circuit breaker box and the associated piping through which the wires will be routed.



Construction Corner cont....





Horticultural Haven

The milkweeds that we had scattered around seem to have spread and are sprouting up randomly across the land. This is good since it is supposed to attract the endangered monarch butterflies. We had a huge harvest of bottle gourds and some luck with a handful of peas. The wild raspberries and blackberries continue to produce well. We have noticed mud dauber nests in the test house and storage shed and have let them stay where they are until we need to move them. There is also a huge paper wasp nest on the path leading up to the test house. We also found a yellow jacket nest in an old tree stump right next to the test house and were forced to spray it since they were starting to sting us as we worked on the house. Unfortunately, the Purple Martin nests did not attract any purple martins; though we did see a bird build a nest in there; but not lay any eggs. The apple trees are showing some damage to the leaves and the one grape vine also has considerable fungal damage. Hopefully we will be able to get some time to address these next year. We got our first decent batch of honey though the bees weren't too happy with Alan when he came for it. We decided to buy a new plastic shelving unit for the garden since we got fed up of the mess and haven't had luck finding a second hand potting table. Since the backhoe was held up for maintenance we ended up doing a lot of weeding in the garden. We picked up 2 fig trees from a lady who was selling it on Nextdoor and she gave us a lot of useful information about care of fruit trees. She suggested that we dig much bigger holes and add soil and manure when we plant next time to avoid the trees from dying.



Horticultural Haven cont....



Horticultural Haven cont...





Repair and Recovery

We had to fix up and widen the stem walls along the straw bale wall on both the inside and outside of the house. The water damage spot in the strawbale wall became worse. So we decided to cut off an entire vertical section and plan to put in a window that we will custom build ourselves. Girija's car's battery gave out one day when we had arrived with both the truck and the car. We had to drive to Thurmont to get a replacement battery to get the car running again.





Volunteers and Visitors

We finally reached out to Ronnie who lived down the road and worked for John Deere. He came down and chatted with us about the backhoe and drove the backhoe to his house to do maintenance work on it. Incidentally he found a yellow jacket nest under the hood and had to spray it! The backhoe drives much better after the maintenance. The only real problem was a blown gasket that was causing the smoking that we had noticed. He also greased and oiled the moving parts; changed filters and fixed a faulty start button. We didn't really have any humans visit; but a baby deer that was obviously separated from its mom spent an entire afternoon on the land crying loudly. It almost walked up to Alan at one point until it darted away on noticing Alan at the last moment. We found a dead red cardinal next to the test house and wonder whether it flew into one of the windows 😞 On a happier note, we have had interesting food trucks visiting the local Catoctin liquor store and on occasion we grab a bite to eat from there.





Secondhand Scrounging

With all the building that we are doing, our purchases have been mainly new materials from Home Depot for framing and electrical wiring. Girija located a PBX on Ebay that she bid on and won. She had been looking for one for quite some time. It was difficult to get one with analog ports. If she did find one, they were huge expensive systems that were being pulled out from big offices or were probably not in working condition or missing power adapters. This one was a Centrepont switch and was pulled out in working order; had the power adapter and had a small footprint. Once Girija gets one more analog phone, she will configure and test it out.

You won this auction. | [View order details](#)

Centerpoint Talkswitch CT-TS01 PBX [See original listing](#)



Condition: **Used**

“In working order when it was removed from service.”

Ended: Sep 01, 2021, 1:43PM

Winning bid: **US \$95.00** [1 bid]

Shipping: **\$17.56** Economy Shipping

Located in: Eastsound, Washington, United States

Seller: [gadgets_stuff4sale](#) (69 ★) | [Seller's other items](#)

[Sell one like this](#)



Tracking with Tech

We haven't added any new features to the website. However, Wordpress got updated on all sites and the latest version was migrating to a new block based frontend for Widgets. This messed up the existing widget configuration. Girija reached out to Bluehost and had to go through a few rounds of tech support help to revert the files to an older version. During that process, Bluehost claimed that some files had been infected. Fortunately these were files that were not being used and we were able to delete them permanently. After that we installed a plugin called Classic Widgets that gives the user the Classic front end for Widget configuration. We had a few tense days when we thought we had to recover our website from scratch. But all's well that end's well.....at least until the next software change!



Search WordPress.org



Showcase Learn Themes **Plugins** Mobile Support Get Involved About Blog Hosting

Get WordPress

Plugins

My Favorites Beta Testing Developers

Search plugins



Classic Widgets

By WordPress Contributors

Download

Details

Reviews

Support

Development

Description

Classic Widgets is an official plugin maintained by the WordPress team that restores the previous ("classic") WordPress widgets settings screens. It will be supported and maintained until at least 2022, or as long as is necessary.

Once activated, this plugin restores the previous widgets settings screens and disables the block editor from managing widgets. There is no other configuration, the classic widgets settings screens are enabled or disabled by either enabling or disabling this plugin.

Version: 0.2

Last updated: 4 months ago

Active installations: 200,000+

WordPress Version: 4.9 or higher

Tested up to: 5.8.1

Languages: [See all 24](#)

Tags: classic widgets disable