

Peach Cobblair

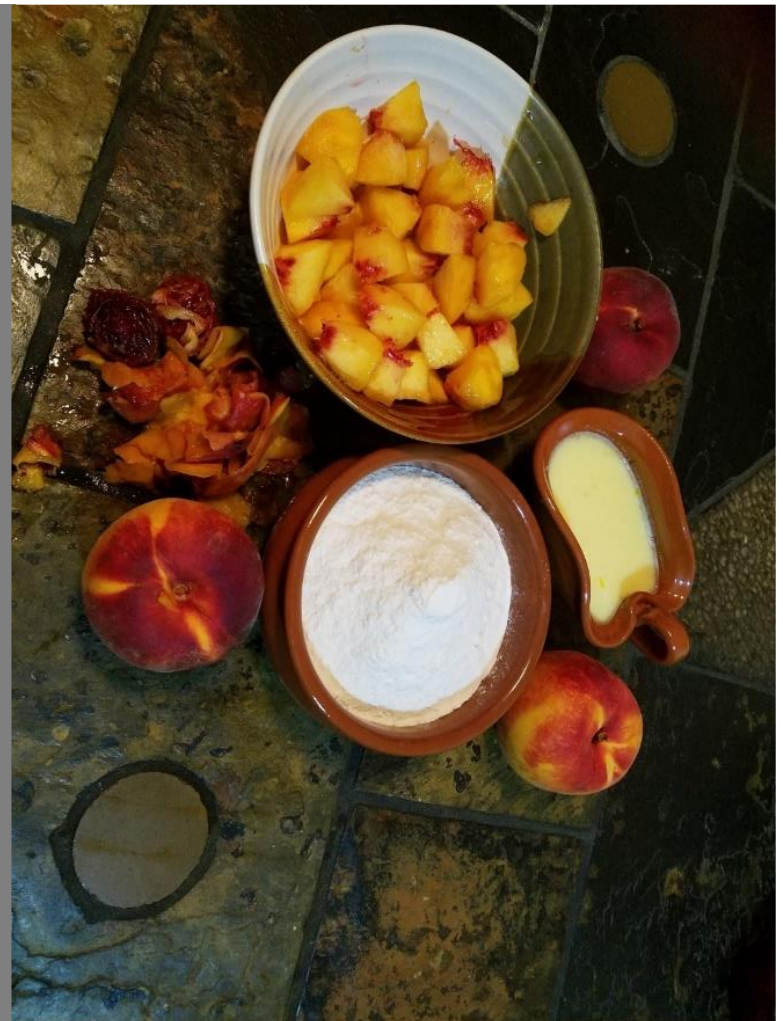


cottage@peachcobblair.com



WINTER 2022

- Throwback Titbits
- Construction Corner
- Horticultural Haven
- Errors and Omissions
- Repair and Recovery
- Secondhand Scrounging





Throwback Titbits: *Winter 2019*

We put down asphalt filings in the path leading up to the test house. We also bought access plumbing pipes and installed it – this will be used to run water ingress flexible piping later. This is done to keep it under the frost line to prevent water from freezing up in the pipe. We then purchased pink insulation boards, mesh sheeting from hardware stores, we picked up additional drainpipes second hand. We ordered stones for the foundation and that got delivered. We had to hand dig the final part of the foundation to ensure there was a slope with a drop of at least 1” per feet before putting down the insulation and mesh sheeting followed by the perforated drain pipe. We built temporary spacers using some wood and metal bolts that was part of the wood stash we had picked up from the wood guy. We then started using the backhoe to pour the stone inside the foundation trench. We had to build a temporary jig to allow us to ‘funnel’ the gravel into the long edge of the foundation. Note that we put down OSB boards before laying down the insulation in order to hold everything in place. We were able to pull most of these boards out using the backhoe once the trench was filled with stone. We made sugar feed for the bees and they are doing well so far. We finally managed to take time for some fun and visited Baltimore, Georgetown and the zoo to admire Christmas lighting. We had another big round of snow and that made January a slow month though Alan managed to volunteer at the Thurmont green fest where the beekeeping group put up a booth to encourage bee keeping amongst the public and kids. We did stop by the land and found a lot of deer tracks in the snow! We baby sat a friend’s rabbit and also got a big load of rabbit poop in exchange for our veggie garden.



Throwback Titbits cont....



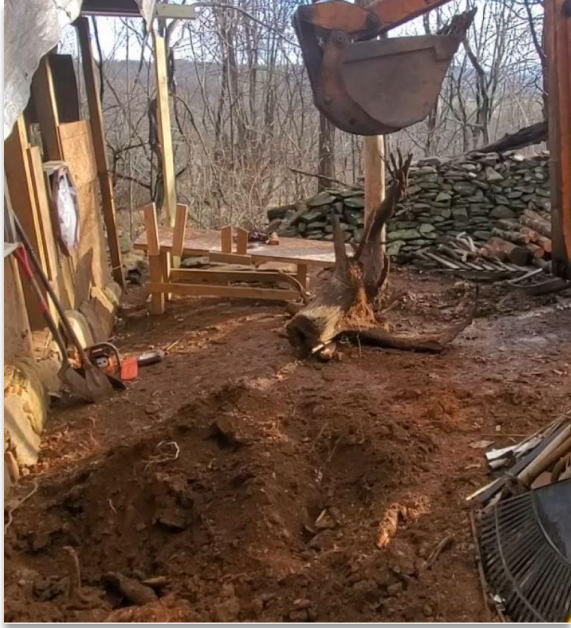


Construction Corner

We had to restack and fix the stone wall at the front and back corner; though we might have to go through more rounds of this once the house is built. We pulled out the tree stump at the back corner and flattened the ground at the back of the house. The wooden rounds are drying nicely. A few were exposed to water dripping from the roof and we moved them out to a better location in the house. We moved out some of the large stones at the back and lined them up next to the table to serve as an area marker. The big work we managed to do was to build a shelter using logs, bamboo, undergrowth and leaves. We will use this to store wood for fire. Girija got this idea from watching the 'Girl in the Woods' channel on YouTube.



Construction Corner cont....





Horticultural Haven

We did a lot of clearing of the paths in the front and the back of the house. We dumped most of the leaves that we removed from the front path onto the shelter that we had built. This let us kill 2 birds with one stone. We put down a couple of pallets and started collecting logs at the back of the house. You can see the sand that we put down for the front path. This keeps the area ready for paving with the wooden rounds as soon as the weather permits. We also raked around the bathtub area and all around the house. Incidentally, there was a forest fire which started one evening on a land in front of the house and we could see the fire engines go in to take care of it.



Horticultural Haven cont...





Errors and Omissions

We had made the mistake of putting the ladder supports flush with the OSB boards on the roof and this caused leaves and water to collect on the roof. We had to clean out the leaves and move the ladder supports leaving a gap for any debris and water to drain out. This backlog had also caused water to drip through the gaps in the boards and into the bond beams below. We had to stand on a precariously positioned ladder and put down additional plastic protective sheeting for the bond beam.





Repair and Recovery

We had a storm with high winds in January and a neighbor reported that a tree had fallen over. You can see the damage in the photos. The entire truss structure had shifted by a few inches; but that was good enough to push the gable truss in the front of the house over the bond beam and ended up hanging in mid-air. We had to prop that up and pull down some of the broken OSBs from the overhang at the back and remove the back overhang. Fortunately, it is salvageable. We used the backhoe to pull the tree log off the roof. Luckily for us, none of the windowpanes cracked.



Repair and Recovery cont....





Secondhand Scrounging

We picked up a big bunch of stones and pavers that was listed on Nextdoor. We actually ended up having to unload some of the stones at home and taking them to the land in 2 runs due to the weight. This was a fantastic find since these are enough to pave a patio like space behind the test house and we got it for free. We also took some time to visit the antique stores in Kensington row during one of the snow weekends and picked up a nice lamp that looks like a candle and Girija picked up a pair of wooden Danish clog shoes from a Nextdoor listing. They ended up being a kid size; but we could use it to grow small plants.

